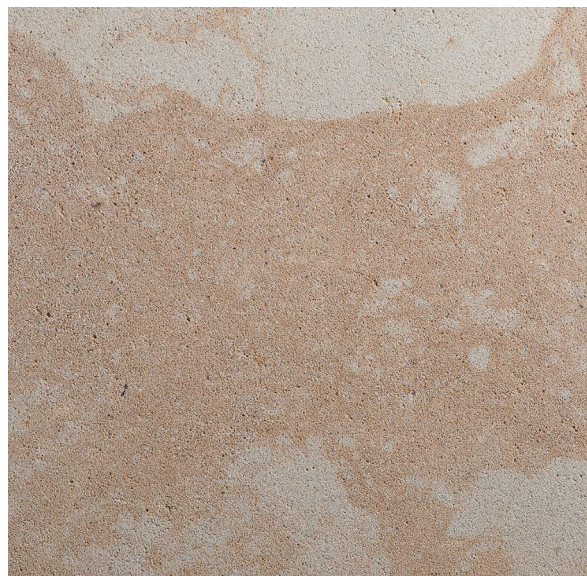


Postaer Sandstein "Alte Poste" Vein-Cut



Trading names:

Postaer Sandstein, Postaer Elbsandstein, Elbsandstein

Information:

"Postaer Sandstein" is particularly prized for its uses in natural stonework thanks to its proven, frost-resistant quality and its distinctive colour, texture and appearance. Numerous historical buildings bear witness to this. It is a popular choice for interior and exterior applications owing to its good physical and technical properties. Its tested and certified resistance to weathering is another major asset.

"Postaer Sandstein" has been extracted from the "Alte Poste" quarry for several centuries.

Regional "Postaer Sandstein "Alte Poste" is a highly sustainable building material.

Proof of delivery:

Bamberger Natursteinwerk
Hermann Graser GmbH
Dr. Robert-Pfleger-Str. 25
96052 Bamberg

Tel.: +49 951 / 9648-0
Fax: +49 951 / 9648-100

info@bamberger-natursteinwerk.de
www.bamberger-natursteinwerk.de

Petrographic name:

Sandstone

Description:

Buff-coloured, variegated, medium-grained sandstone from the Upper Cretaceous (Turonian) formation near Lohmen/Saxony (Germany).

Occurrence:

Quarry "Alte Poste"
01796 Pirna, Saxony, Germany

Geo coordinates:

Latitude: 50°58'44.45"N, Longitude: 13°58'19.86"E

Structure:

Buff to intensive buff, medium-grained sandstone with dark red spots, medium to coarse pores and a homogeneous texture.

Grain colours:

Quartz: light-buff to buff
Quartzite: buff
Accessory minerals: grey-black

Mineral composition (Vol-% normalized):

(DIN EN 12407)
Quartz (ca. 87%), quartzite (ca. 11%) and accessory minerals (ca. 2%)

Petrographic identification:

Quartz sandstone with siliceous cementation.

Further surface examples and Information:

www.bamberger-natursteinwerk.de

Proof and confirmation of suitability by EC declaration of conformity, as well as CE marking available. We will be happy to provide your project related with references, test reports and further information.